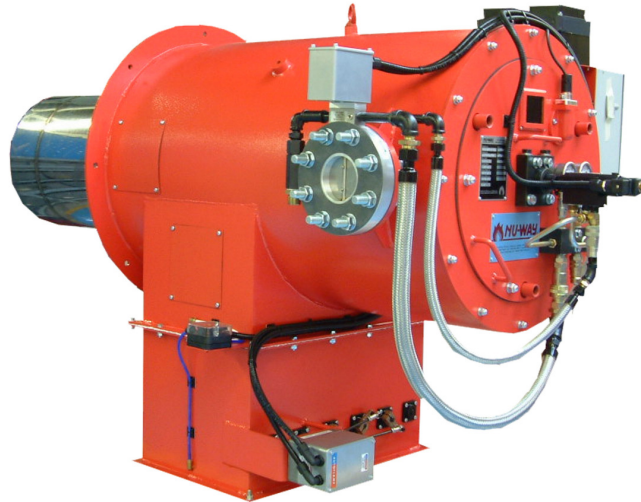


PDF400 Dual Fuel Burner



PDF400 Dual Fuel Burner features:

- Available configured for Natural Gas, LPG or Biogas combined with distillate or residual oils - other fuels on request
- Applications include steam and high pressure hot water boilers, as well as more diverse processes such as rotary dryers
- Separate floor-mounted combustion air fan or monoblock design option
- High Pressure oil atomisation (no compressed air or steam required)
- Skid mounted oil pump and heater unit for easy installation
- Fully modulating operation as standard on both fuels
- Microprocessor based Autoflame sequence control (Siemens LMV5 or ETC options) with servo motor fuel/air ratio management for up to 7:1 turndown (gas) and 4:1 turndown (oil)
- Integrated PID control for accurate response to demand
- Optional Extras:
 - Exhaust gas analysis for passive monitoring of emissions
 - Oxygen trim for improved emissions control
 - Variable speed drive combustion fan for improved electrical efficiency
 - Air inlet silencer (<85 dBA)
 - Non Autoflame mechanical linkage
 - Separate or integrated water level controls for steam boiler
 - Data Transfer Interface (DTI)
 - Low NOx head (<80mg/kWh)*
- Optional air and gas handing configurations available to suit appliance
- All kW ratings in net CV



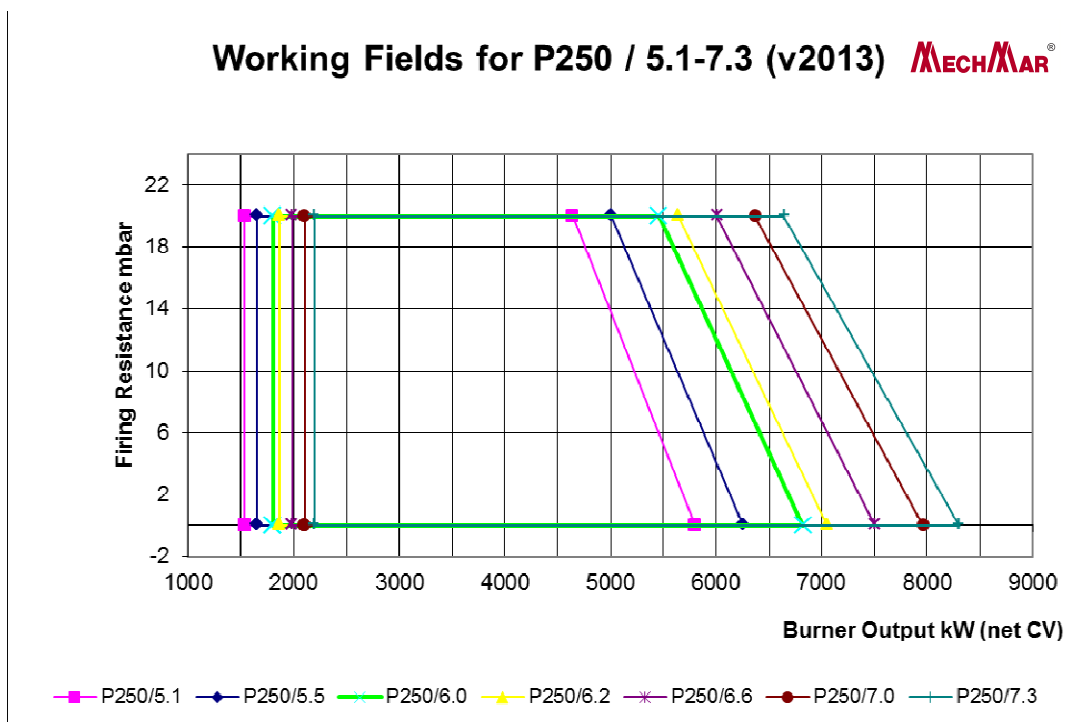
For more information on Mechmar products
please visit www.mechmar.com.sg

MECHMAR®

Model PDF		400/9.5	400/9.9	400/10.3	400/10.6	400/11.0	400/11.4	400/11.7
Output (NCV)	MW	8.5	8.9	9.3	9.6	9.9	10.3	10.5
Fan Size	kW	18.5	22	22	22	22	30	30
Oil Pump Motor	kW	4.0	4.0	4.0	4.0	4.0	4.0	4.0
Oil Pre-heater (Residual Fuel only)	kW	30	30	30	30	30	36	36
Electrical Supply	V/Hz	400/50	400/50	400/50	400/50	400/50	400/50	400/50
Oil inlet pressure	psi	5 to 10	5 to 10	5 to 10	5 to 10	5 to 10	5 to 10	5 to 10
Gas inlet pressure (min/max)	mbar	140/300	140/300	140/300	140/300	140/300	140/300	140/300
Gas train inlet conn.		PN16 DN100	PN16 DN100	PN16 D100	PN16 DN100	PN16 DN100	PN16 DN100	PN16 DN100
Operation		Fully Modulating	Fully Modulating	Fully Modulating	Fully Modulating	Fully Modulating	Fully Modulating	Fully Modulating
Control Unit		Autoflame Mini Mk7	Autoflame Mini Mk7	Autoflame Mini Mk7	Autoflame Mini Mk7	Autoflame Mini Mk7	Autoflame Mini Mk7	Autoflame Mini Mk7
Gas Turndown		up to 7.0	up to 7.0	up to 7.0	up to 7.0	up to 7.0	up to 7.0	up to 7.0
Oil Turndown		up to 4.0	up to 4.0	up to 4.0	up to 4.0	up to 4.0	up to 4.0	up to 4.0
Flame Monitor		UV Sensor	UV Sensor	UV Sensor	UV Sensor	UV Sensor	UV Sensor	UV Sensor
Flame tube lengths	mm	430/610	430/610	430/610	430/610	430/610	430/610	430/610
GAS								
Noise	dBA	93 <85 with silencer	93 <85 with silencer	93 <85 with silencer	93 <85 with silencer	93 <85 with silencer	93 <85 with silencer	93 <85 with silencer
NOx	mg/kWh	140-190 (<100*)	140-190 (<100*)	140-190 (<100*)	140-190 (<100*)	140-190 (<100*)	140-190 (<100*)	140-190 (<100*)
OIL								
Noise	dBA	93 <85 with silencer	93 <85 with silencer	93 <85 with silencer	93 <85 with silencer	93 <85 with silencer	93 <85 with silencer	93 <85 with silencer
NOx	mg/kWh	200-280 (<100*)	200-280 (<100*)	200-280 (<100*)	200-280 (<100*)	200-280 (<100*)	200-280 (<100*)	200-280 (<100*)
CO	mg/kWh	<110	<110	<110	<110	<110	<110	<110

Information for standard design and subject to change.

* Low NOx head design <80mg/kWh subject to suitable combustion chamber design.



MECHMAR (PTE) LTD

56 Kian Teck Road Singapore 628791

Tel: 6268 3048 Fax: 6261 4049

E-mail: mechmar@singnet.com.sg

Website: www.mechmar.com.sg

